

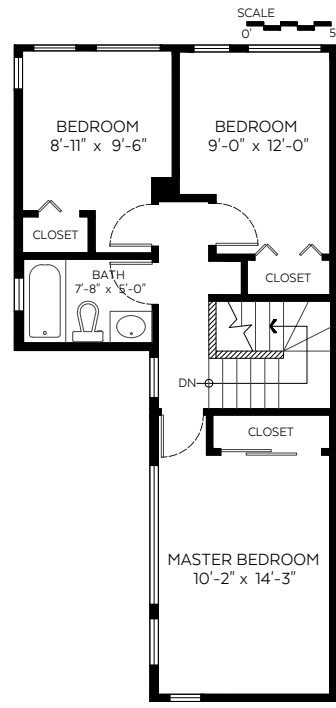
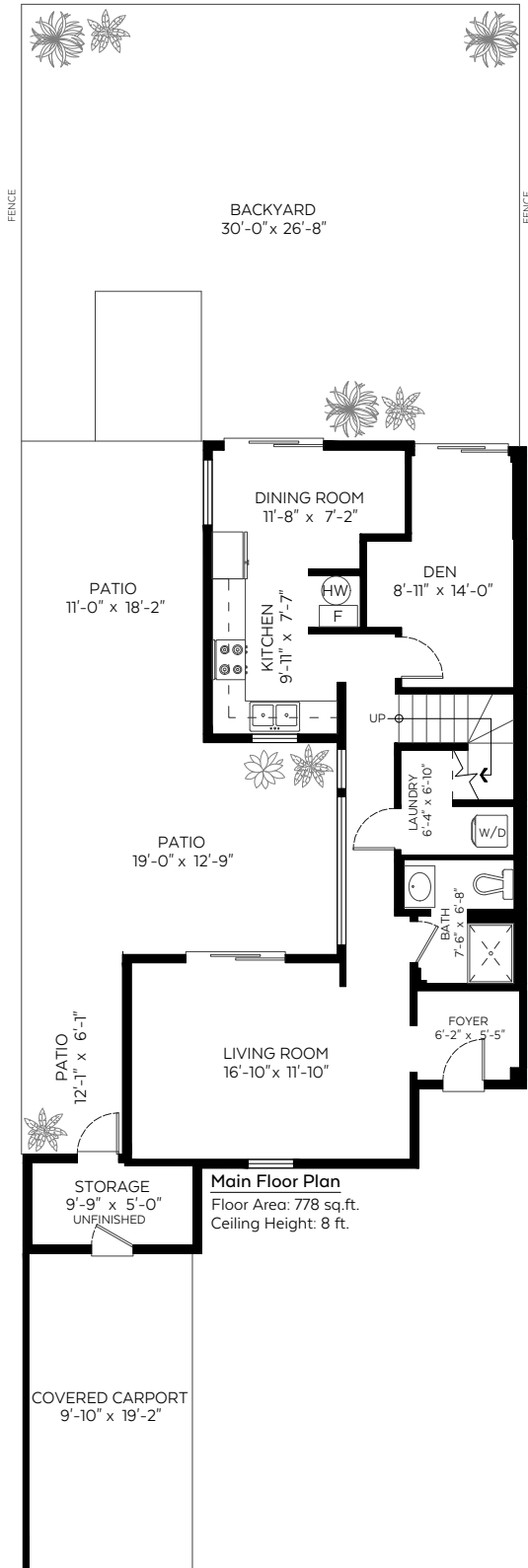
848 Greene Street,
 Coquitlam, B.C.

Main Floor: 778 sq.ft.
 Upper Floor: 592 sq.ft.

Total: 1,370 sq.ft.

Auxiliary Area

Carport: 189 sq.ft.
 Patio: 516 sq.ft.
 Backyard: 793 sq.ft.
 Storage: 61 sq.ft.



Measured on: November 10, 2020

The floor plan is not suitable for architectural/construction and is covered under E&O. © Excelsior Measuring Inc. 2019. All rights reserved for Excelsior Measuring Inc. Users shall not publish and distribute such material (in whole or in part) and/or incorporate it in other works in any form.